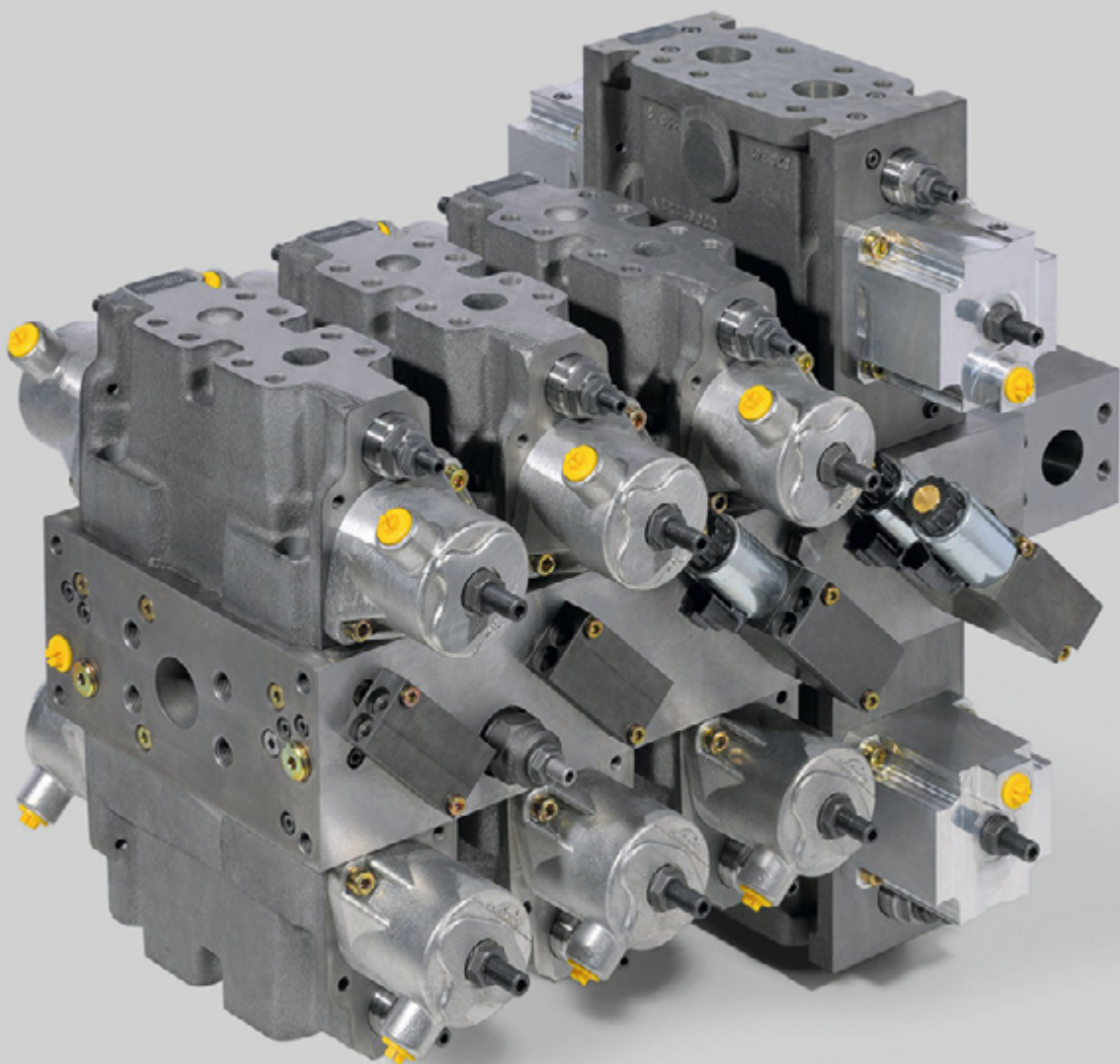


**VT modular.**

3D Models & Installation Drawings  
on Linde Hydraulics Website.

Linde Hydraulics

*Linde*



## 3D Models.

Place holder	System component	Name	File name 3D model
VT1EE	VT1EE	VT1 base plate without pilot control	6670035331hm351
VT	VT1EA	IF32 expansion module, single without pilot	6670035332hm350
	VT1EB	IF32 expansion module, single without pilot for VW18-CF18	6670035339hm350
	VT1EP	IF32 expansion module, single without pilot, with P connection	6670035333hm350
	VT1ED	IF32 expansion module, double section without pilot	6670035334hm350
VT1AB	VT1B	IF32 expansion module, blanking plate	6678053519hm350
	VT1A	IF32 pressure relief module	6678053516hm350
VT4E	VT4E	VT4E base plate without pilot control	6673105349hm350
VT8E	VT8E	VT8E base plate without pilot control	6673105355hm350
KT	KT3	Tank check modules 3bar	6678053515hm351
	KT5	Tank check modules 5bar	6678053515hm351
	KT3/5	Combined Tank check module 3bar and 5bar	6673400802hm350
Vst	ABP	air bleed plates for hydraulic piloting	6673405100hm350
	ABP1		6673405101hm350
	DMV1/24	Pressure-reducing valve modules for e/h actuation, single 24V	6673405102hm350
	DMV11/24		6673405103hm350
	DMV1/12	Pressure-reducing valve modules for e/h actuation, single 12V	6673405102hm350
	DMV11/12		6673405103hm350
	DMV2 A-SIDE	Combination of ABP with DMV2/24 or DMV2/12 for A-side	6673405104hm351
	DMV2 B-SIDE	Combination of ABP with DMV2/24 or DMV2/12 for B-side	6673405104hm352
VW18-CF18	18ZY	Directional control valve VW18, cylinder, asymmetric	6680039295hm350
	18N	Directional control valve VW18, tilt, asymmetric	6680039295hm350
	18A	Directional control valve VW18, cylinder, asymmetric	6680039295hm350
	18S1	Directional control valve VW18, cylinder, asymmetric	6680039295hm350
	18ZU	Directional control valve VW18, additional function, symmetric	6680039295hm350
	18D2	Directional control valve VW18, rotate 2, symmetric	6683109683hm350
	18W1	Directional control valve VW18, hoist 1, symmetric	6680039295hm350
	18F1	Directional control valve VW18, track-drive 1, symmetric	6683109683hm350
	18F2	Directional control valve VW18, track-drive 2, symmetric	6683109683hm350
18M2	Directional control valve VW18, track-drive 2, symmetric	6683109683hm350	
VW-CF25	25ZY	Directional control valve VW25, cylinder, asymmetric	6693409305hm350
	25N	Directional control valve VW25, tilt, asymmetric	6693409305hm350
	30ZY	Directional control valve VW30, cylinder, asymmetric	6703409215hm350
	30A	Directional control valve VW30, cylinder, asymmetric	6703409215hm350
	25ZU	Directional control valve VW25, additional function, symmetric	6693409315hm350
	25D1	Directional control valve VW25, rotate 1, symmetric	6693409315hm350
	25D2	Directional control valve VW25, rotate 2, symmetric	6693409305hm350
	30ZU	Directional control valve VW30, additional function, symmetric	6703409215hm350
	25W1	Directional control valve VW25, hoist 1, symmetric	6693409305hm350
	25W2	Directional control valve VW25, hoist 2, symmetric	6693409305hm350
	30W	Directional control valve VW30, hoist, symmetric	6703409215hm350
	25F1	Directional control valve VW25, track-drive 1, symmetric	6693409315hm350
25F2	Directional control valve VW25, track-drive 2, symmetric	6693409315hm350	
	CF25B	CF25 blanking plate	6698053501hm350

## Installation Drawings.

Place holder	System component	Name	File name Installation drawing
VT1EE	VT1EE	VT1 base plate without pilot control	6678053517V00Ed001 6678053517V00END001
VT	VT1EA	IF32 expansion module, single without pilot	6678053520V00Ed001 6678053520V00END001
	VT1EB	IF32 expansion module, single without pilot for VW18-CF18	6678053525V00Ed001 6678053525V00END001
	VT1EP	IF32 expansion module, single without pilot, with P connection	6678053521V00Ed001 6678053521V00END001
	VT1ED	IF32 expansion module, double section without pilot	6678053522V00Ed001 6678053522V00END001
VT1AB	VT1B	IF32 expansion module, blanking plate	6678053519V00Ed001 6678053519V00END001
	VT1A	IF32 pressure relief module	6678053516V00Ed001 6678053516V00END001
VT4E	VT4E	VT4E base plate without pilot control	6678053523V00Ed001 6678053523V00END001
VT8E	VT8E	VT8E base plate without pilot control	6678053524V00Ed001 6678053524V00END001
KT	KT3	Tank check modules 3bar	6678053515DEd001 6678053515END001
	KT5	Tank check modules 5bar	6678053515DEd001 6678053515END001
	KT3/5	Combined Tank check module 3bar and 5bar	6678053506DEd001 6678053506END001
Vst	ABP	air bleed plates for hydraulic piloting	6678053518V00Ed001 6678053518V00END001
	<b>ABP1</b>		6678053518V00Ed001 6678053518V00END001
	DMV1/24	Pressure-reducing valve modules for e/h actuation, single 24V	6678053518V00Ed002 6678053518V00END002
	DMV11/24		6678053518V00Ed002 6678053518V00END002
	DMV1/12	Pressure-reducing valve modules for e/h actuation, single 12V	6678053518V00Ed002 6678053518V00END002
	DMV11/12		6678053518V00Ed002 6678053518V00END002
	<b>DMV2/24</b>		6678053518V00Ed003 6678053518V00END003
	<b>DMV2/12</b>		6678053518V00Ed003 6678053518V00END003

## Installation Drawings.

Place holder	System component	Name	File name Installation drawing
VW18- CF18	18ZY	Directional control valve VW18, cylinder, asymmetric	6688053506V00DEd001
	18N	Directional control valve VW18, tilt, asymmetric	6688053506V00DEd001
	18A	Directional control valve VW18, cylinder, asymmetric	6688053506V00DEd001
	18S1	Directional control valve VW18, cylinder, asymmetric	6688053506V00DEd001
	18ZU	Directional control valve VW18, additional function, symmetric	6688053506V00DEd001
	18D2	Directional control valve VW18, rotate 2, symmetric	6688053507V00DEd001
	18W1	Directional control valve VW18, hoist 1, symmetric	6688053506V00DEd001
	18F1	Directional control valve VW18, track-drive 1, symmetric	6688053507V00DEd001
	18F2	Directional control valve VW18, track-drive 2, symmetric	6688053507V00DEd001
	18M2	Directional control valve VW18, track-drive 2, symmetric	6688053507V00DEd001
VW- CF25	25ZY	Directional control valve VW25, cylinder, asymmetric	6698053500DEd001 6698053500END001
	25N	Directional control valve VW25, tilt, asymmetric	6698053500DEd001 6698053500END001
	30ZY	Directional control valve VW30, cylinder, asymmetric	6708053500DEd001 6708053500END001
	30A	Directional control valve VW30, cylinder, asymmetric	6708053500DEd001 6708053500END001
	25ZU	Directional control valve VW25, additional function, symmetric	6698053500DEd001 6698053500END001
	25D1	Directional control valve VW25, rotate 1, symmetric	6698053500DEd001 6698053500END001
	25D2	Directional control valve VW25, rotate 2, symmetric	6698053500DEd001 6698053500END001
	30ZU	Directional control valve VW30, additional function, symmetric	6708053500DEd001 6708053500END001
	25W1	Directional control valve VW25, hoist 1, symmetric	6698053500DEd001 6698053500END001
	25W2	Directional control valve VW25, hoist 2, symmetric	6698053500DEd001 6698053500END001
	30W	Directional control valve VW30, hoist, symmetric	6708053500DEd001 6708053500END001
	25F1	Directional control valve VW25, track-drive 1, symmetric	6698053500DEd001 6698053500END001
	25F2	Directional control valve VW25, track-drive 2, symmetric	6698053500DEd001 6698053500END001
	CF25B	CF25 blanking plate	6698053501V03DEd001 6698053501V03END001

# How to reach us.

**Mail** Linde Hydraulics GmbH & Co. KG  
Wailandtstraße 13  
63741 Aschaffenburg, Germany

**Phone** +49.60 21.150-00 switchboard

**Fax** +49.60 21.150-142 61

**Email** [info@linde-hydraulics.com](mailto:info@linde-hydraulics.com)

**Internet** [www.linde-hydraulics.com](http://www.linde-hydraulics.com)

LHY.VTM.02/22.d

## Linde Hydraulics worldwide

- (E)** Linde Hydraulics Iberica S.L.  
Cami Can Ubach, 41A, 08620 Sant Vicenç dels Horts, Barcelona, Telefon +34 9366 332 58, [info@linde-hydraulics.com.es](mailto:info@linde-hydraulics.com.es)
- (F)** Linde Hydraulics France  
1, rue du Maréchal de Lattre de Tassigny, 78990 Elancourt, Telefon +33 1 30 68 45 40, [info.fr@linde-hydraulics.com](mailto:info.fr@linde-hydraulics.com)
- (GB)** Linde Hydraulics UK  
12-13 Eyston Way, Abingdon Oxfordshire OX14 1TR, Telefon +44 1235 522 828, [enquiries@lindehydraulics.co.uk](mailto:enquiries@lindehydraulics.co.uk)
- (I)** Linde Hydraulics Italia  
Via dell'Unione Europea, 33, 21013 Gallarate (VA), Telefon +39 0331 1824910, [info.it@linde-hydraulics.com](mailto:info.it@linde-hydraulics.com)
- (USA)** Linde Hydraulics USA  
5089 Western Reserve Road, Canfield Ohio 44 406, Telefon +1 330 533 6801, [info.us@linde-hydraulics.com](mailto:info.us@linde-hydraulics.com)
- (BR)** Linde Hydraulics do Brasil  
Rua Victorino, 134 Jardim Mutinga 06463-290 - SP, Brasil, Telefon +55 11 99 18 20 438, [info.br@linde-hydraulics.com](mailto:info.br@linde-hydraulics.com)
- (VRC)** Linde Hydraulics China  
No. 197 Fushou East Road, 261000 Weifang, Telefon +86 536 50 75 268, [info.@linde-hydraulics.com.cn](mailto:info.@linde-hydraulics.com.cn)  
No. 89 Jinshang Road, 361009 Xiamen, Telefon +86 592 53 87 701, [info.@linde-hydraulics.com.cn](mailto:info.@linde-hydraulics.com.cn)

Turning Power into Motion.

